

LIFTER



Item no. 275000
Trolley inserted
crosswise

Lifter hydraulic HHN-B

Front loading
Lifting and tilting of trolleys

For trolleys 1.200 x 800 mm

Tilting up to a 40 degree angle

Max. load capacity up to 1.200 kg

All items have the CE-mark certification
and correspond to

Electro-hydraulic 400 / 24 V

Table top shape

Item no.	Description Size	Load capacity
275000	1.300 x 550 x 220 mm Lifting to 550 mm (15 sec) for trolleys 1.200 x 800 mm inserted crosswise	750 kg
275001	1.020 x 770 x 220 mm Lifting to 550 mm (15 sec) for trolleys 1.200 x 800 mm inserted crosswise	1.200 kg

The appearance of the lifters may differ from the illustrated models.
Other models available on request.

LIFTER

Lifter hydraulic HHN-P

Front loading
Lifting and tilting of pallets



Item no. 275004
table top shape



Item no. 275005
U-shape

For pallets, pallet cages or other containers size 1.200 x 800 mm

Extremely minimal height of 80 or 100 mm

Load capacity up to 2.000 kg

Can be loaded by commercial forklift trucks (forklift, manual lift truck or pallet truck) within standard EN-1570-1

All items have the CE-mark certification and correspond to

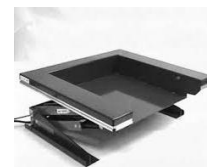
Electro-hydraulic 400 / 24 V

Table top shape

Item no.	Description Size	Load capacity
275000	1.300 x 550 x 220 mm Lifting to 550 mm (15 sec)	750 kg
275001	1.020 x 770 x 220 mm Lifting to 550 mm (15 sec)	1.200 kg
275004	1.000 x 1.300 x 380 mm Lifting to 550 mm (16 sec)	1.500 kg

U-shape

Item no.	Description Size	Load capacity
275005	1.380 x 1.310 x 6 mm Inner dimension 1.200 x 850 mm Lifting to 820 mm (16 sec)	1.500 kg
275006	1.380 x 1.510 x 6 mm Inner dimension 1.200 x 1.050 mm Lifting to 820 mm (16 sec)	1.500 kg
275007	1.380 x 1.730 x 6 mm Inner dimension 1.200 x 1.270 mm Lifting to 820 mm (16 sec)	1.500 kg



The appearance of the lifters may differ from the illustrated models.

LIFTER

Lifter hydraulic HHS-F

Front loading – lifting column
Lifting and turning of pallets



Item no. 275010
Lifting column
turnable



Item no. 275008
Lifting column

For containers size 1.200 x 800 mm
or 1.200 x 1.000 mm

Tilting up to a 40 degree angle left &
right

Load capacity up to 1.500 kg

Can be loaded by commercial forklift
trucks (forklift, manual lift truck or pallet
truck) within standard EN-1570-1

All items have the CE-mark certification
and correspond to

Electro-hydraulic 400 / 24 V

Lifting

Item no.	Description Size	Load capacity
275008	1.245 x 850 x 70 mm Lifting to 900 mm (13sec) for containers 1.200 x 800 mm	1.000 kg
275009	1.245 x 1.040 x 10 mm Lifting to 900 mm (13 sec) for containers 1.200 x 1.000 mm	1.000 kg

Lifting and turning

Item no.	Description Size	Load capacity
275010	1.245 x 850 x 70 mm Lifting to 900 mm (13sec) for containers 1.200 x 800 mm	1.000 kg

The appearance of the lifters may differ from the illustrated models

LIFTER

Lifter hydraulic HHT-F

Front loading
Table top shape



Item no. 275015

For pallets, pallet cages or other containers size 1200 x 800 mm

Extremely minimal height of 80 or 100 mm

Load capacity up to 2.000 kg

Can be loaded by commercial forklift trucks (forklift, manual lift truck or pallet truck) within standard EN-1570-1

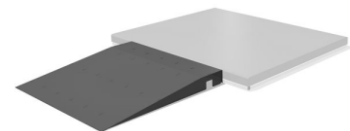
All items have the CE-mark certification and correspond to

Electro-hydraulic 400 / 24 V

Item no.	Description Size	Load capacity
275015	1.500 x 900 x 80 mm Lifting to 720 mm (13 sec)	600 kg
275016	1.500 x 900 x 80 mm Lifting to 970 mm (19 sec)	600 kg
275017	1.350 x 800 x 80 mm Lifting to 820 mm (13 sec)	1.000 kg
275018	1.350 x 800 x 100 mm Lifting to 820 mm (24 sec)	2.000 kg

Addition access ramps

275619	ramp 800 mm wide
275620	ramp 1000 mm wide



The appearance of the lifters may differ from the illustrated models.

LIFTER**Lifter hydraulic
HHU-F**

Front loading
U-shape design



Item no. 275011

For pallets, pallet cages or other containers size 1.200 x 800 mm

Extremely minimal height of 80 or 100 mm

Load capacity up to 2.000 kg

Can be loaded by commercial forklift trucks (forklift, manual lift truck or pallet truck) within standard EN-1570-1

All items have the CE-mark certification and correspond to

Electro-hydraulic 400 / 24 V

Item no.	Description Size	Load capacity
275011	1.450 x 900 x 80 mm Lifting to 720 mm (13 sec)	600 kg
275012	1.450 x 900 x 80 mm Lifting to 970 mm (19 sec)	600 kg
275013	1.350 x 1.080 x 80 mm Lifting to 820 mm (13 sec)	1.000 kg
275014	1.350 x 1.180 x 100 mm Lifting to 820 mm (24 sec)	2.000 kg

The appearance of the lifters may differ from the illustrated models.